

BUILD TO SUIT

1501 INDUSTRIAL PARK DR
MAYSVILLE, KY 41056

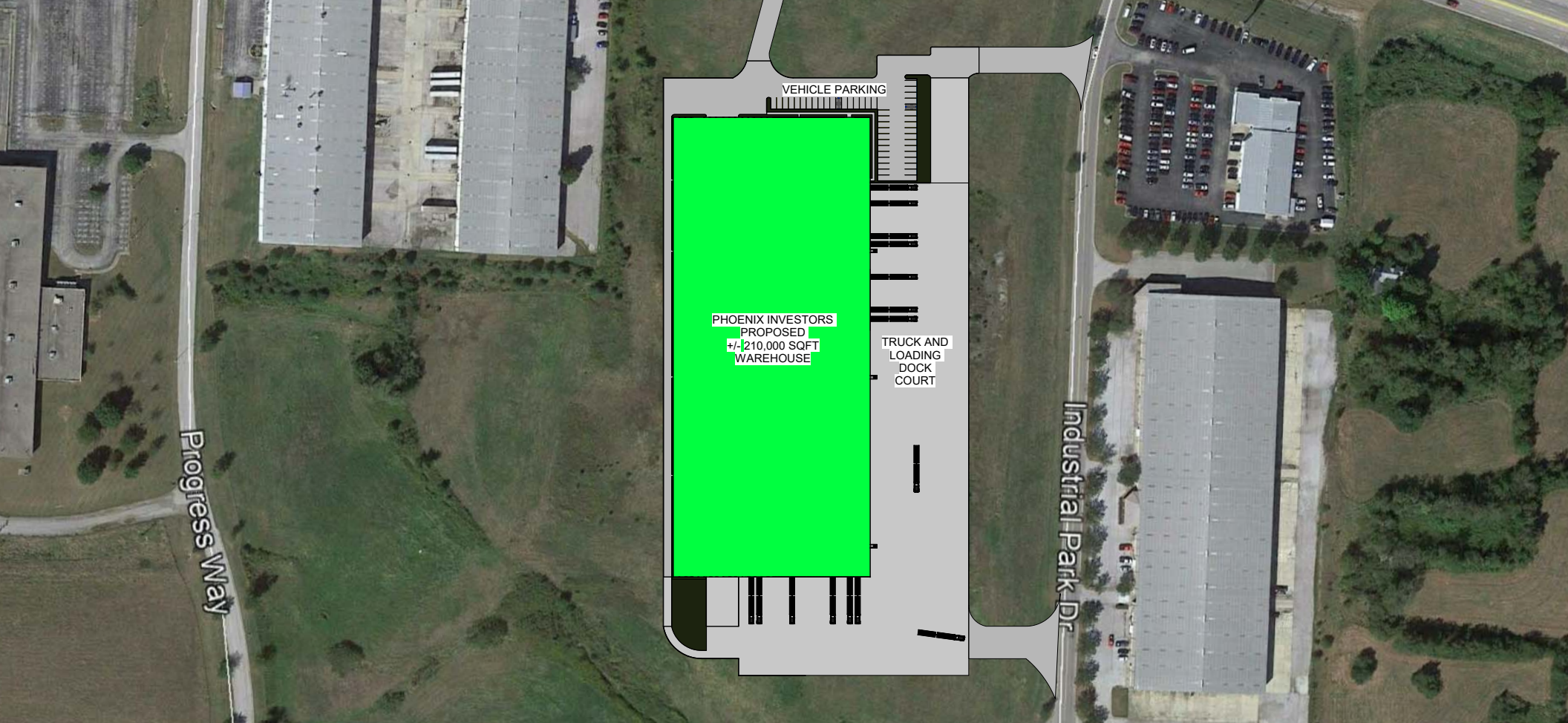


PHOENIX
INVESTORS

ANTHONY CRIVELLO

(414) 405-2496

ANTHONY@PHOENIXINVESTORS.COM



BUILDING SPECIFICATIONS

WAREHOUSE SPACE

210,000 SF

OFFICE SPACE

5,000 SF

ROOF

EPDM OR TPO

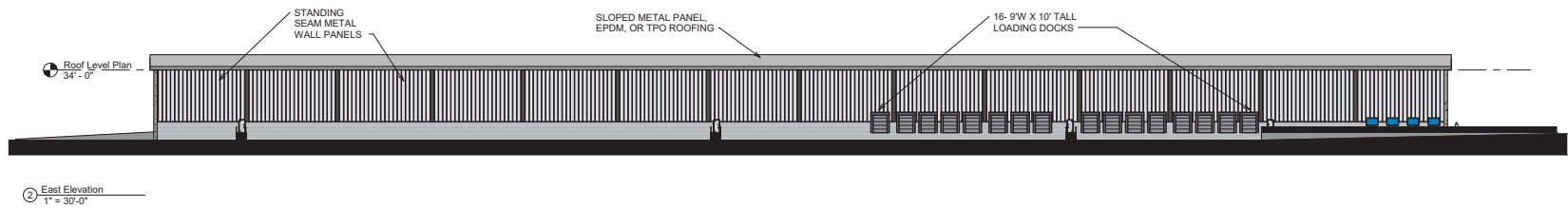
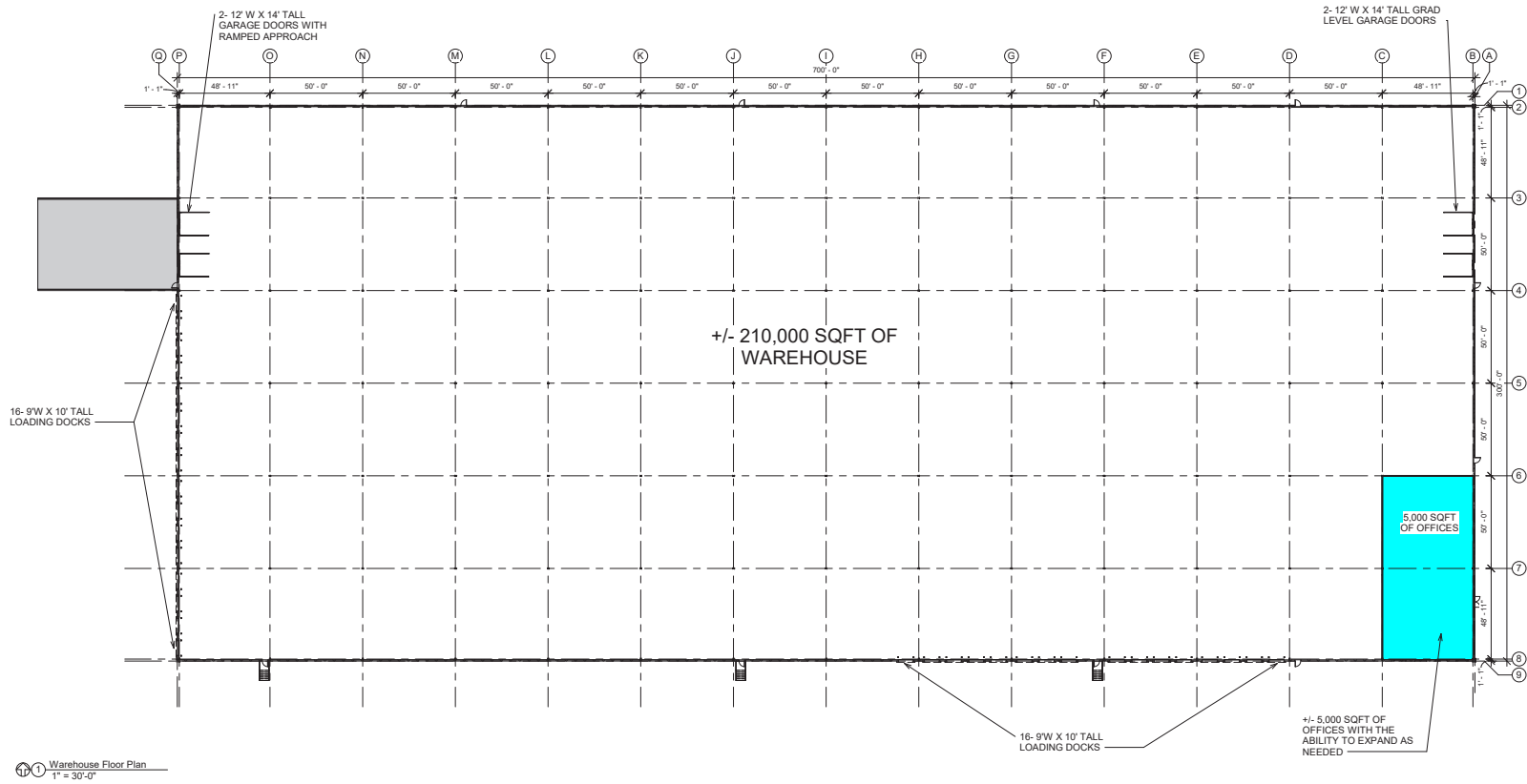
WALLS

METAL

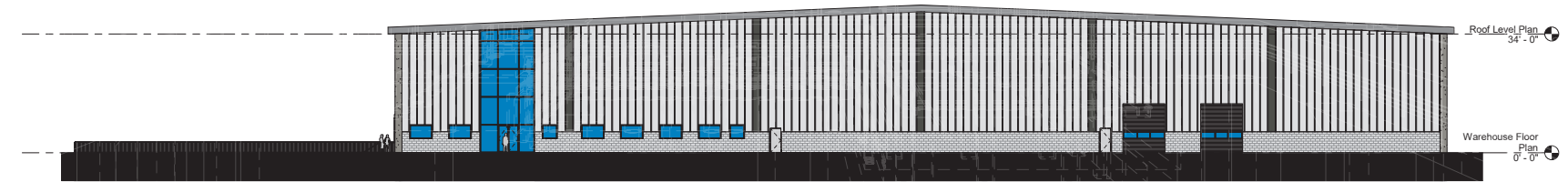
DOCK DOORS

32

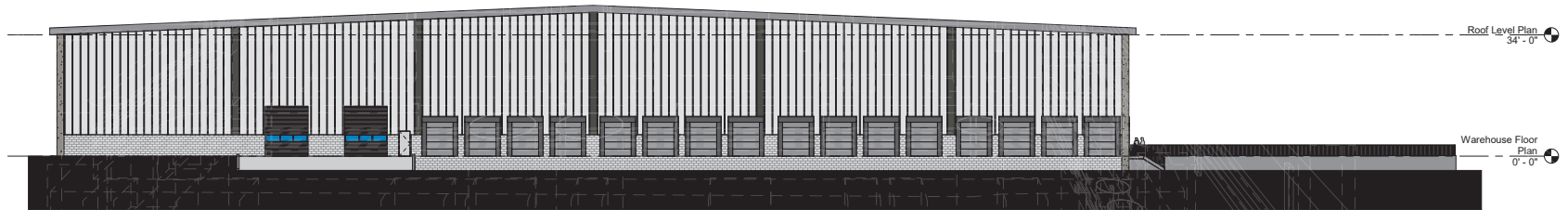
FLOOR PLAN



BUILDING PLAN



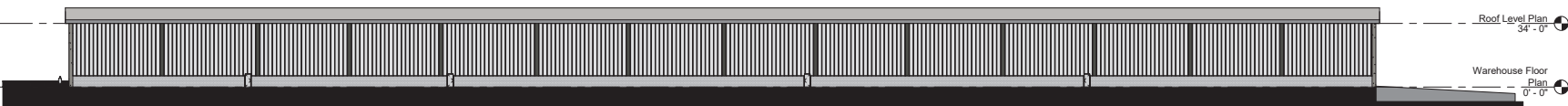
① North
1/16" = 1'-0"



② South
1/16" = 1'-0"



③ East
1" = 30'-0"



④ West
1" = 30'-0"

BUILDING PLAN

3 Perspective
1" = 30'-0"



2 North Facade
1" = 30'-0"



1 South Facade
1" = 30'-0"



BUILD TO SUIT

1501 INDUSTRIAL PARK DR
MAYSVILLE, KY 41056

CINCINNATI

58 MILES

LEXINGTON

62 MILES

LOUISVILLE

134 MILES

I-64: 40 MILES

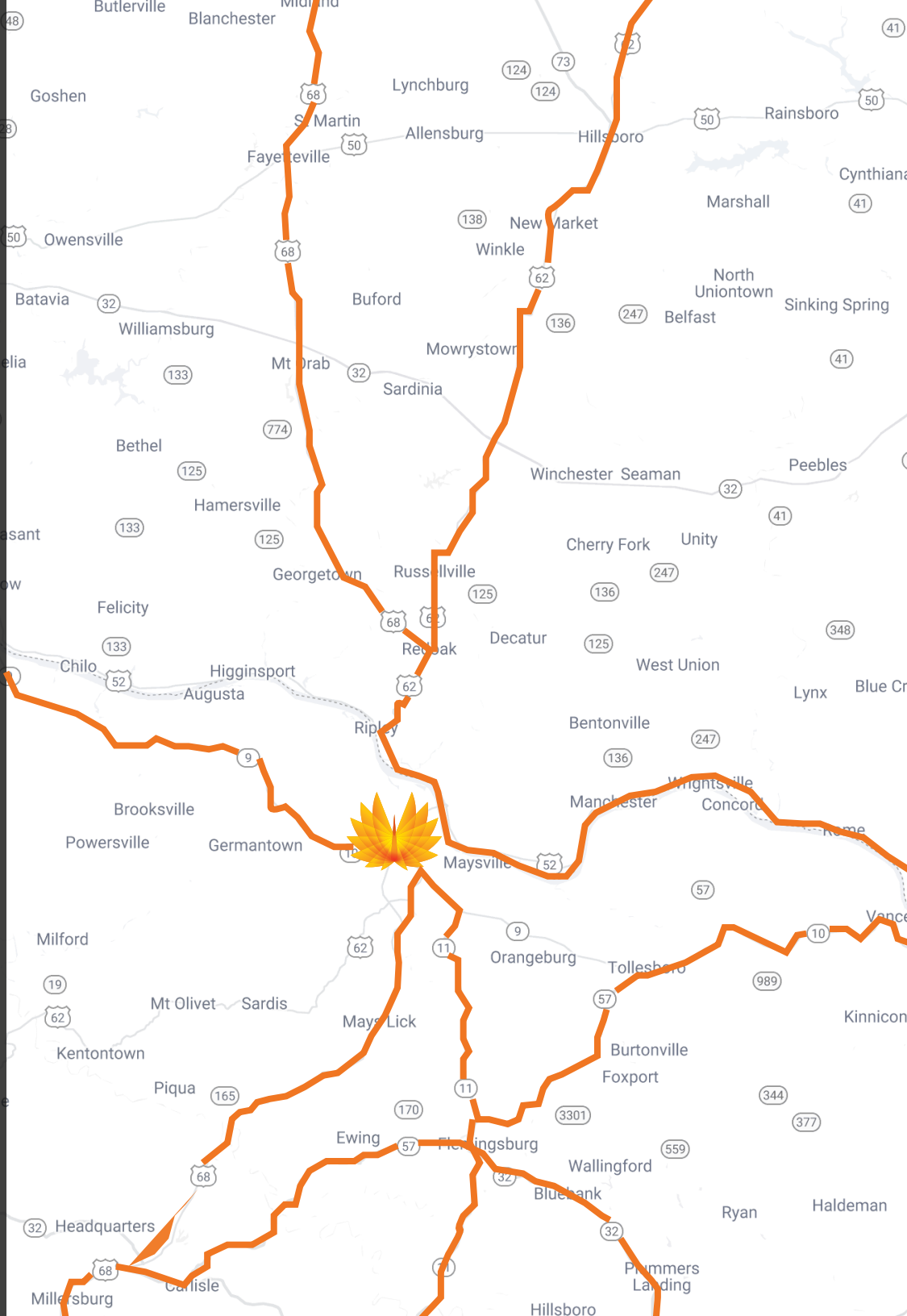
40 MILES

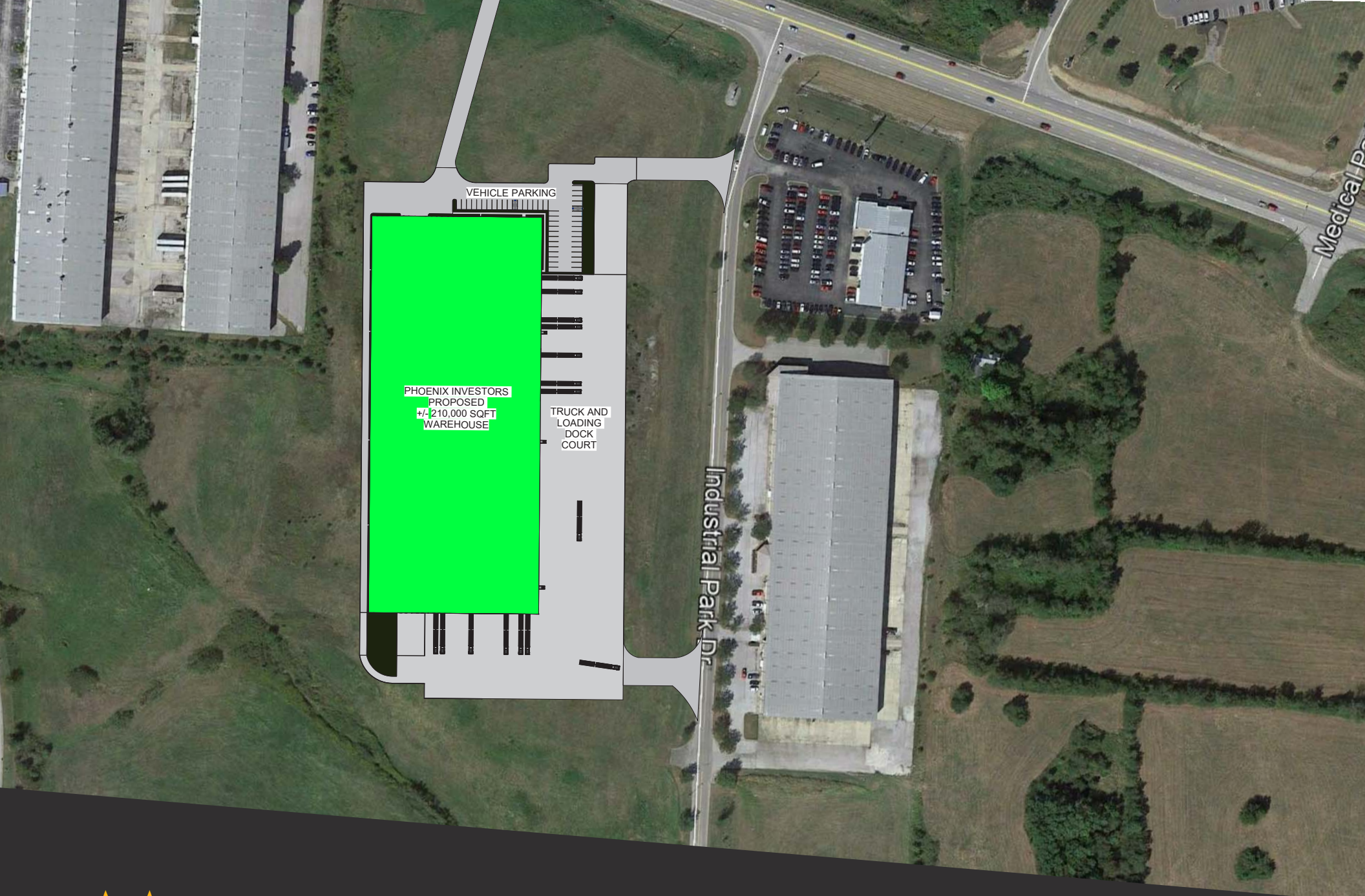
FLEMING-MASON AIRPORT

10 MILES

MAJOR EMPLOYERS

MITSUBISHI ELECTRIC AUTOMOTIVE AMERICA INC
GREEN TOKIA CO. LTD.
CROUNSE CORPORATION





PHOENIX
INVESTORS

ANTHONY CRIVELLO

(414) 405-2496

ANTHONY@PHOENIXINVESTORS.COM